



WELCOME TO FORTY THREE

43 Castle Street is a beautiful and iconic building situated within The 'Commercial Quarter' and Castle Street Conservation Area, in the heart of Liverpool's business district.

Constructed during the 1950's, the property has recently undergone a comprehensive refurbishment of the reception, lift lobbies and the whole 5th floor, offering contemporary first class office accommodation.

Liverpool Town Hall sits majestically at the northern end of Castle Street. To the southern end you will find the Queen Elizabeth II Law Courts and the Memorial to Queen Victoria.

Rich in history, Castle Street is home to some of the most architecturally impressive buildings in the city.

LOCATION

43 Castle Street is situated in a prominent location in Liverpool city centre, ideally positioned within the city's prime financial and business district.

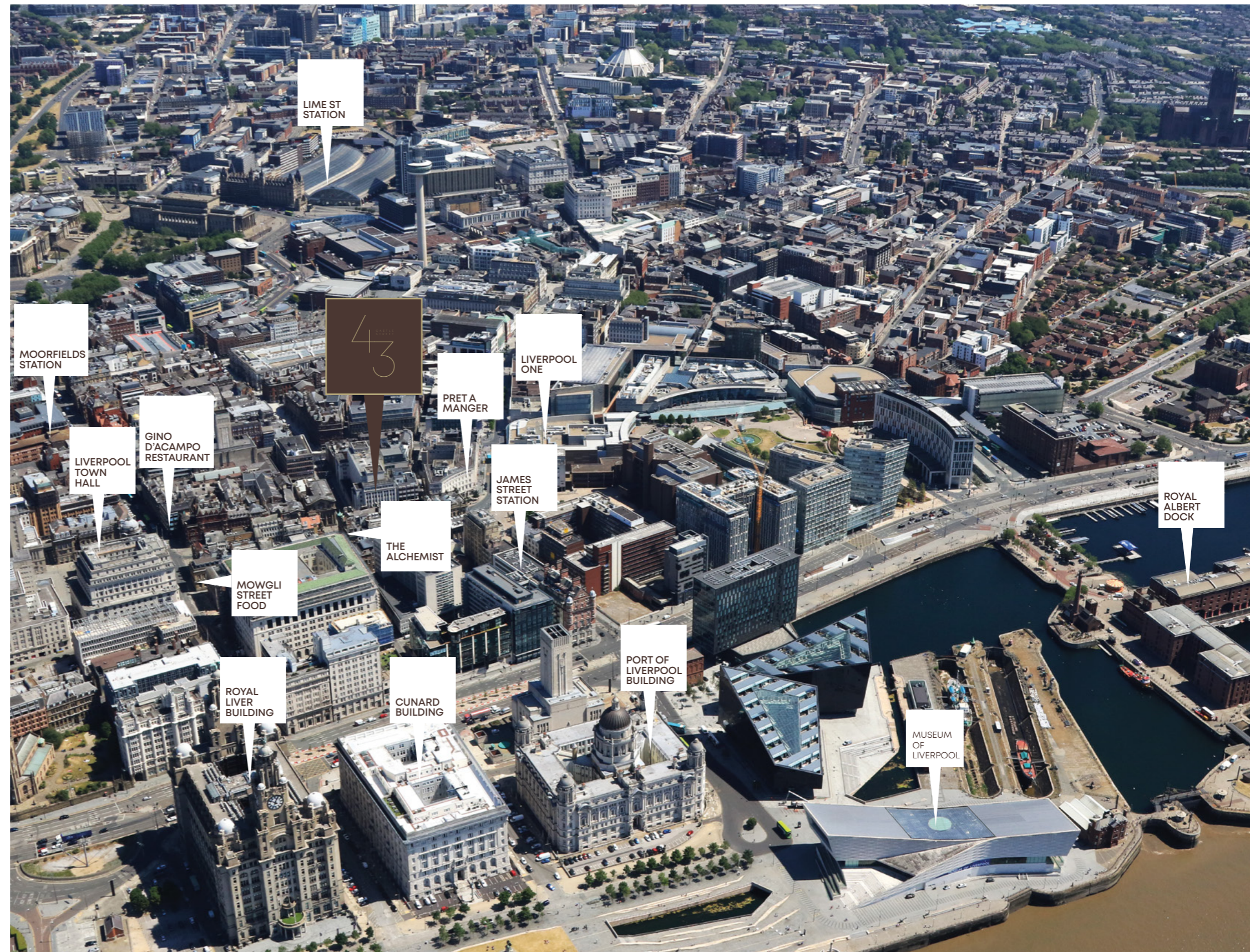
Surrounded by world class amenities, 43 Castle Street is within walking distance of the UNESCO World Heritage Site including the famous Royal Liver Building and Cunard Building, the Commercial District of Old Hall Street and Exchange Flags and the historic Mathew Street. At the heart of Liverpool's vibrant waterfront and just a 10 minute walk away, is the Royal Albert Dock, a blend of the old and new offering everything from culture to cuisine.

Just 150m away lies Liverpool One, with over 170 bars, shops and restaurants over 5 districts, there's something for everyone.

And right on the doorstep of number 43, is a plethora of bars, restaurants, hotels and cultural venues including the award winning San Carlo restaurant located on the ground floor.

Following significant public realm investment, Castle street has witnessed a fundamental shift in recent years towards an exciting food and beverage offering, reflective of a European café culture.

Alongside wonderful restaurants such as Baraco and Gino D'Acampo Restaurant, Castle Street is home to Liverpool Gin Distillery which offers visitors the chance to see its distillers in action, producing its very own Liverpool Gin on-site in a custom-built 6ooltr copper still.



ACCOMMODATION

50's architecture was inherently stylish and contemporary and 43 Castle Street is no exception. Having recently undergone a comprehensive programme of refurbishment to the lift lobbies, the whole of the 5th floor and ground floor reception, the building offers a range of accommodation from entire floors to boutique style suites for well-established and growing businesses with flexibility to suit.

From the moment you enter the building, the light filled contemporary reception has been styled in neutral colours and natural textures with informal meeting spaces and a coffee station to create a relaxed atmosphere.

43 Castle Street is a space that embraces the modern ways of working with the flexibility to represent your company's identity and brand.



SPECIFICATION

The offices are specified to a contemporary, high quality standard, designed to an occupational density of 1:10 sq m, with the scope to be enhanced.

In brief, this comprises:

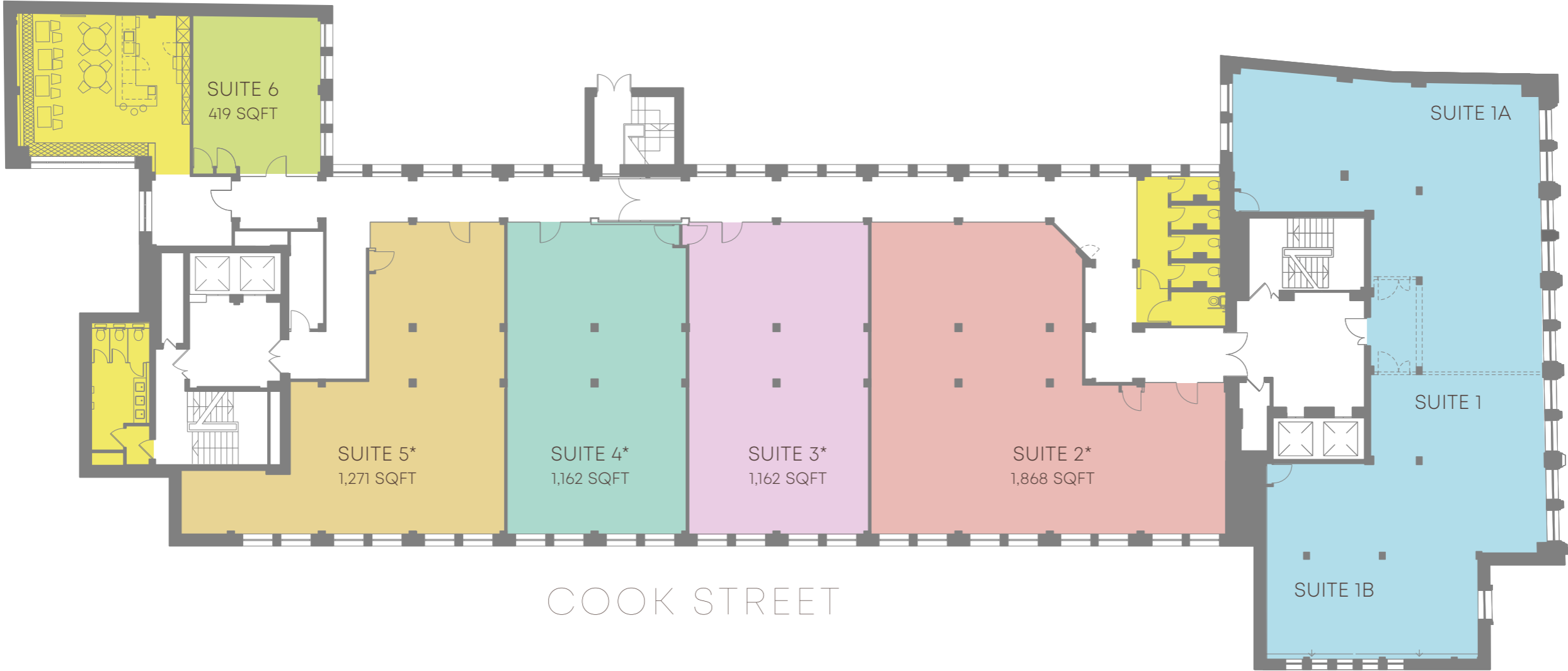
- Open-plan office space
- VRF heating/cooling system*
- Mechanical ventilation*
- High quality carpets
- Double glazed windows
- Exposed services
- LED Pendant Uplight and Downlight fittings
- Perimeter trunking
- Communal kitchen and breakout facilities to 5th and 3rd floors.
- Dedicated ladies and gentleman toilets to 5th floor
- Bookable 6 person meeting room facilities located on the 3rd floor.

* Available on selected suites.

Please contact the joint letting agents for further information.



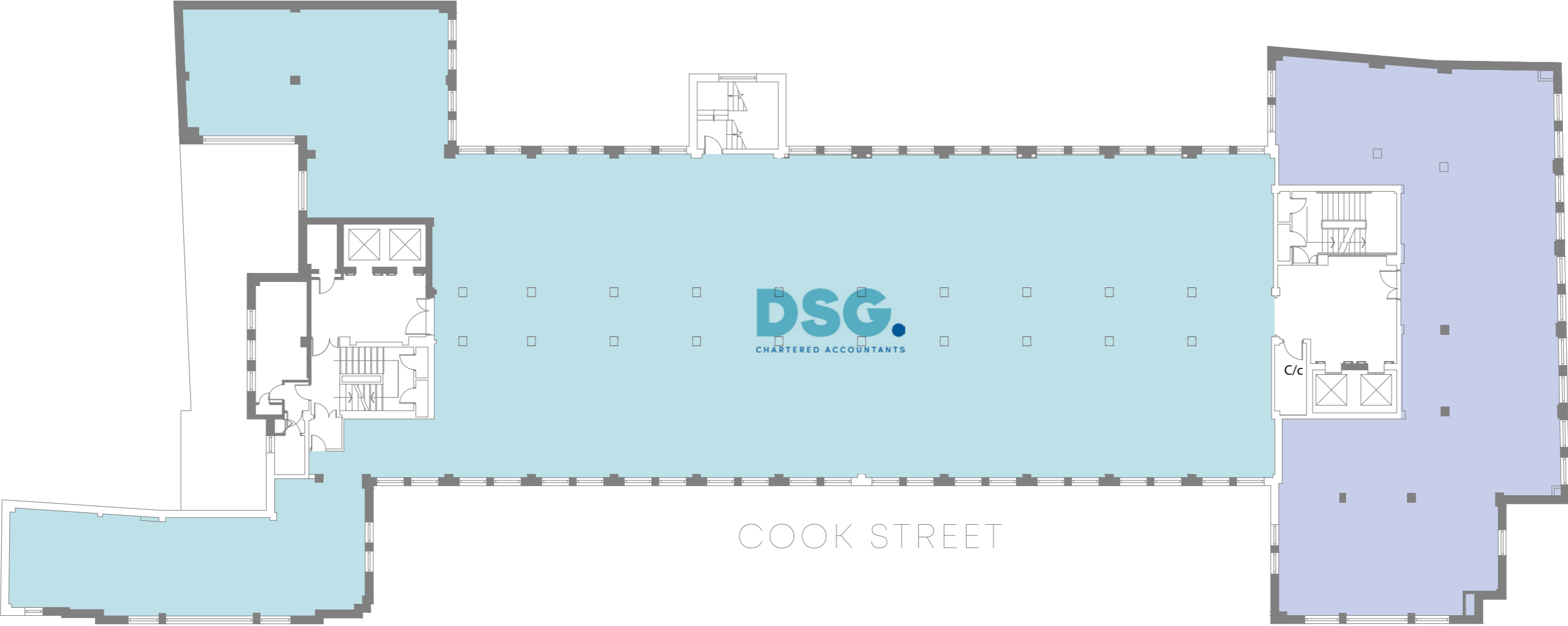
5TH FLOOR - 8,679 SQFT



<div style="display: flex; align-items: center;"> <div style="width: 15px; height: 15px; background-color: #ADD8E6; margin-right: 5px;"></div> <div> <p>Suite 1 2,797 sqft</p> </div> </div>	or	<div style="display: flex; align-items: center;"> <div style="width: 15px; height: 15px; background-color: #ADD8E6; margin-right: 5px;"></div> <div> <p>Suite 1a 1,376 sqft</p> </div> </div>	<div style="display: flex; align-items: center;"> <div style="width: 15px; height: 15px; background-color: #ADD8E6; margin-right: 5px;"></div> <div> <p>Suite 1b 1,327 sqft</p> </div> </div>	<div style="display: flex; align-items: center;"> <div style="width: 15px; height: 15px; background-color: #F08080; margin-right: 5px;"></div> <div> <p>Suite 2* 1,868 sqft</p> </div> </div>	<div style="display: flex; align-items: center;"> <div style="width: 15px; height: 15px; background-color: #DDA0DD; margin-right: 5px;"></div> <div> <p>Suite 3* 1,162 sqft</p> </div> </div>	<div style="display: flex; align-items: center;"> <div style="width: 15px; height: 15px; background-color: #66CDAA; margin-right: 5px;"></div> <div> <p>Suite 4* 1,162 sqft</p> </div> </div>	<div style="display: flex; align-items: center;"> <div style="width: 15px; height: 15px; background-color: #D2B48C; margin-right: 5px;"></div> <div> <p>Suite 5* 1,271 sqft</p> </div> </div>	<div style="display: flex; align-items: center;"> <div style="width: 15px; height: 15px; background-color: #9ACD32; margin-right: 5px;"></div> <div> <p>Suite 6 419 sqft</p> </div> </div>	<div style="display: flex; align-items: center;"> <div style="width: 15px; height: 15px; background-color: #FFFF00; margin-right: 5px;"></div> <div> <p>Kitchen/breakout area and toilets</p> </div> </div>
---	----	---	---	--	---	---	---	--	---

*Please note: Units can be combined to suit specific requirements

4TH FLOOR SUITE 1 - 3,040 SQFT

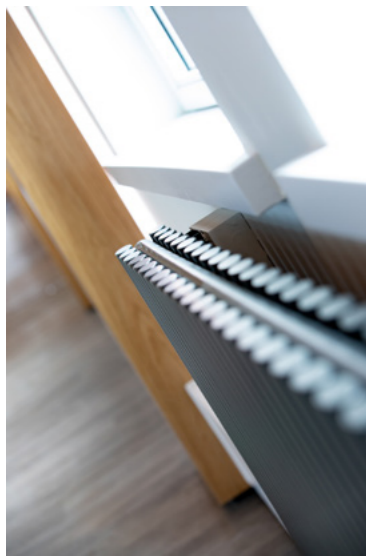


DSG.
CHARTERED ACCOUNTANTS

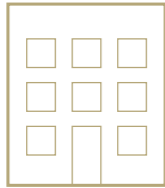
COOK STREET

CASTLE STREET

Suite 1
3,040 sqft



AMENITIES



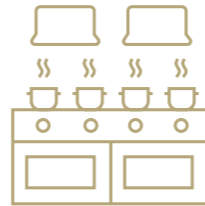
BUILDING

Accessible to occupiers via a fob operated security system. 24hrs a day, 7 days a week.
The main entrances are covered by CCTV cameras which are linked to monitors and recording equipment in the reception area.



BUILDING CONCIERGE

Monday to Friday:
0700 am to 1800 pm
Saturday:
0800 am to 1300 pm



COMMUNAL KITCHEN FACILITIES

Kitchen and breakout facilities on both the 3rd and 5th floors.



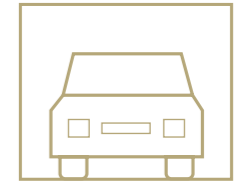
MEETING FACILITIES

Meeting facilities are available on the 3rd floor.



BUSES

Liverpool One Bus station
7 min walk
Queens Square Bus Station
8 min walk



CAR PARK

Q Park - 8 min walk
The Capital Building
6 min walk
Queens Square - 8 min walk
NCP Moorfields - 7 min walk



CAR PARK

16 spaces
Please contact the building management team for more information.



CYCLE STORAGE & SHOWER FACILITIES

Cycle storage is available in the basement car park.

Shower facilities, lockers and changing facilities are available on the 7th floor



HIGH SPEED WI-FI

High speed Wi-Fi is available in the Castle Street reception and 3rd floor meeting room.



RESTAURANTS AND LEISURE FACILITIES CLOSE BY

Castle Street affords occupiers with an abundance of bars, restaurants and cultural venues.



TRAIN STATIONS

James Street Station is a 2 minute walk away and provides connections to both the Wirral and main line/northern line stations – Lime Street Station, Moorfields and Central Station.
Further details: www.merseytravel.gov.uk





HISTORY OF CASTLE STREET

The History of Castle Street goes back centuries. Castle Street was one of the original seven ancient streets in the city evidenced on maps dating back to the 13th century.

Before Liverpool was even a city, when it was still a medieval town several hundred years ago, Castle Street was an important route to and from the ports and the castle that sat at the top of modern day Lord Street.

It is believed that the castle was constructed under the order of William de Ferrers the 4th Earl of Derby, which corresponds to present day Derby Square where you will find the Queen Victoria Monument today.

Estimated to have been built between 1232 and 1237, Liverpool Castle stood until the mid-18th century close to where the Liverpool Courts stand today. In fact, if you look at the Liverpool Crown Courts you will see they resemble the look of a castle and Liverpool Castle is what the design was inspired by.



43 Castle Street
Liverpool
L2 9SH
0151 236 2179

Letting Enquiries



neil.kirkham@cbre.com
Call: 0151 471 4933

rebecca.ashall@cbre.com
Call: 0151 471 4909



brianricketts@hwandp.co.uk
Call: 0151 227 3400

